

CABLE CAB-SS40-M

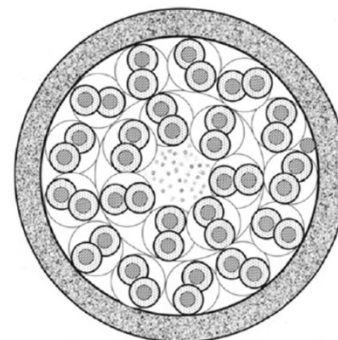
20x2x22 AWG Cable



CAB-SS40-M

20x2x22 AWG

Sch. All/My PE/PVC



PURPOSE

Electrical cable for control panel inside connection and/or control equipment. Static application in even wet environment.

CONSTRUCTION

Conductor:	Tinned copper strand, class: 5 (Normative CEI 20-29) Formation: 7x0.25, Ø mm. 0.75
Insulation:	Material: Polyethylene, tipe: LDPE (Normative CEI 20-11) Nominal Ø mm. 1.50, tolerance: mm ±0.05 Colors: BL x7 – RD x7 – YE x4 – BR x3 – OR x3 – WH x5 – GREEN x7 – BL x4
Couples:	N° of couples: 20 Nominal Ø mm. 3.00, tolerance: mm ±0.10
Total Stranding:	N° of couples: 20 Nominal Ø mm. 13.00, tolerance: mm ±0.10 Separator tape: Polyester tape
Total Shield:	Shield type: Aluminium/polyester tape, coverage: 100% Drainage/Separator tape: Tinned copper strand 7x0.20
External Sheath:	Material: PVC, Type: RZ AF (Normativa CEI 20-35) Nominal Ø mm. 16.60, tolerance: mm ±0.30 (Normative CEI 20-37 II) Color: BLUE RAL 5015 (Normative ROHS 2002/95/EC) Cable marking: LOGIC-PAVIA CAB-SS40-M

TECHNICAL CHARACTERISTICS

Electrical Characteristics:	Test voltage = 4.000 V Capacity ≤ 46.14 nF/km at 20°C Inductance ≤ 0.58 mH/km at 20°C Insulation resistance ≥ 500 MΩ/km at 20°C Conductors resistance ≤ 60.50 Ω/km at 20°C Impedance = 110 Ω
Physical Characteristics:	Working temperature -50°C ÷ +80 °C Min. bending radius = 234 mm Total weight = 315 Kg/km

Electrical cable in accordance with **Directive BT2014/35/EU**