

CELLA DI CARICO A PONTE

Carico nominale 100 KLbs

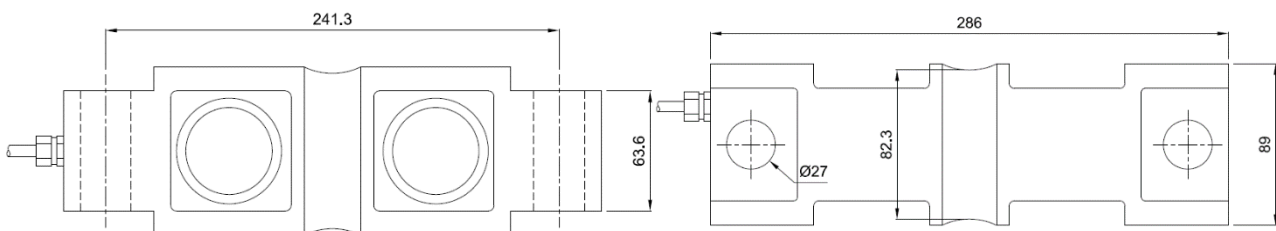


QSC

SPECIFICHE TECNICHE

Sensitivity	mV/V	3±0.03
Total Error	%FS	±0.05
Creep	%FS/30min	±0.02
Zero Balance	%FS	±1
Zero Temperature Drift	%FS/10°C	±0.02
Rated Output Temperature Drift	%FS/10°C	±0.02
Input Resistance	Ω	750±10
Output Resistance	Ω	702±3
Insulation Resistance	MΩ	≥ 5.000
Supply Voltage	Vac/dc	1 ÷ 15
Compensated Temperature Range	°C	-10 ÷ +50
Operating Temperature Range	°C	-30 ÷ +70
Safe Overload	%FS	150
Ultimate Load	%FS	300
Material		Stainless steel
Sealing		IP67-Welded
Cable (Diameter/Length)		Ø 6 mm/7m
Cable Color Code		Input: Red(+), Black (-) Output: Green (+), White (-)
Rated Loads	Lbs	100.000

DIMENSIONI

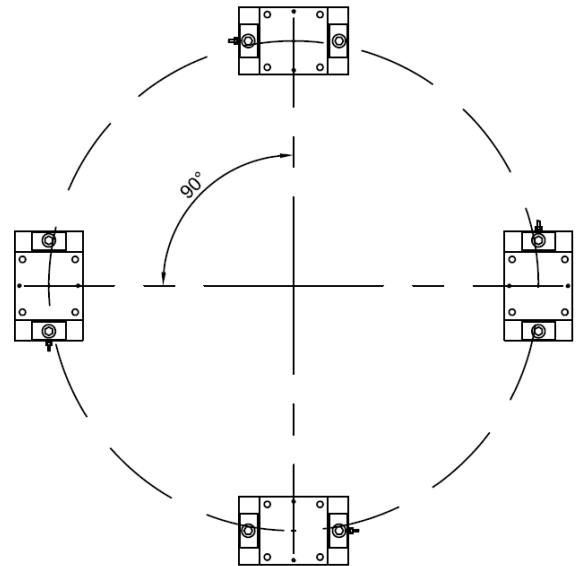
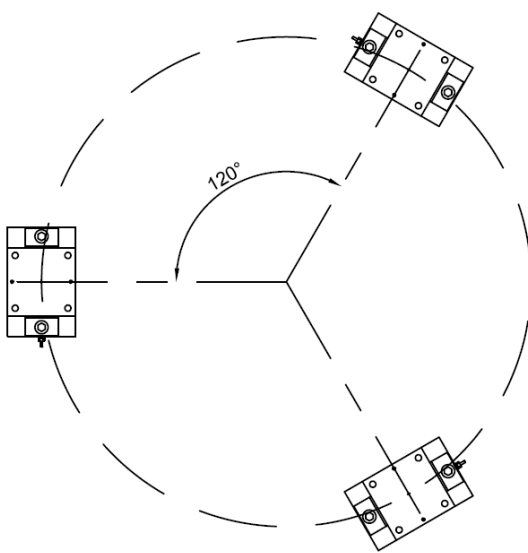


CELLA DI CARICO A PONTE

Carico nominale 100 KLbs



DISPOSIZIONE A 3 O 4 CELLE DI CARICO



SISTEMA DI MONTAGGIO MK-DSB-PZ-100KLbs

