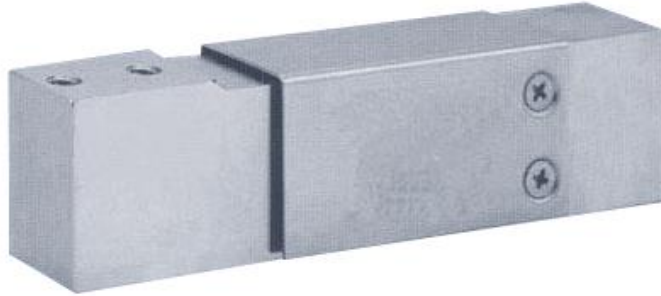


CELLA DI CARICO OFF-CENTER

Carico nominale da 5 a 100 Kg

Logic
automation and engineering

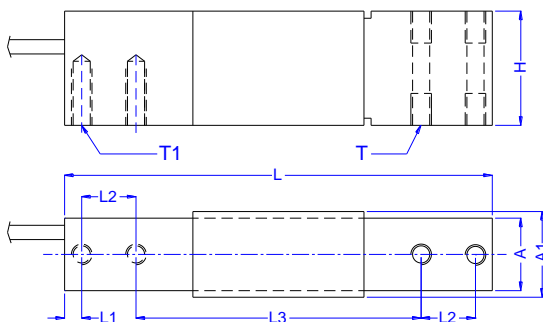


PE-2A

SPECIFICHE TECNICHE

Sensitivity	mV/V	2±0.02
Non-linearity	%FS	±0.02
Hysteresis	%FS	±0.02
Repeatability	%FS	±0.01
Creep	%FS/30min	±0.02
Zero Balance	%FS	±1
Zero Temperature Drift	%FS/10°C	±0.02
Rated Output Temperature Drift	%FS/10°C	±0.02
Input Resistance	Ω	410±10
Output Resistance	Ω	350±3
Insulation Resistance	MΩ	≥ 5.000
Supply Voltage	Vac/dc	10 ÷ 15
Compensated Temperature Range	°C	-10 ÷ +50
Operating Temperature Range	°C	-20 ÷ +60
Safe Overload	%FS	120
Material		Aluminum/Stainless steel
Sealing		IP65-Resin Potted
Cable (Diameter/Length)		Ø 5 mm / 3m
Cable Color Code		Input: Red(+), Black (-) Output: Green (+), White (-)

DIMENSIONI



Load [Kg]	Size [mm]							
	A	A1	L	L1	L2	L3	H	T, T1
5÷100	25.4	30	150	6	19	100	40	M6x1